



SPECIFICATIONS

Item No.: HCA516T

Description: High Accuracy Digital Type Single-axis Inclinometer

Production implementation standard reference

- Enterprise quality system standards: ISO9001: 2008 standard (certification number: 128101)
- Tilt sensor production standards: GB / T 191 SJ 20873-2003 inclinometer general specification of Level
- The Academy of metrology and quality inspection Calibrated in accordance to: JJF1119-2004

Electronic Level calibration Specification

- Software development reference standard: GJB 2786A-2009 military software development General requirements
- Product environmental testing standards: GJB150
- Electromagnetic anti-interference test standards: GB / T 17626
- Version: Ver.10
- Date: 2015.8.28

HCA516T-High Accuracy Digital Type Single-axis Inclinator



General Description

HCA516T is a high accuracy single-axis inclinometer launched by RION company, inherit the stability of the SCA series, while the accuracy be effectively improved, and the temperature drift performance with much more excellence, in addition the system with built-in high-precision 16bit A / D differential converter, meanwhile through 5 filtering algorithm, which can measure the angle of sensor output relative to the horizontal tilt and pitch tilt. The output interface RS485, RS232, RS422, TTL, or CAN 2.0B are optional. Because of Built in ADI company's high precision digital temperature sensor that can correct the sensor temperature drift in accordance with the changes of the built-in temperature sensor, to ensure high repeatability of the product in the low-temperature and high-temperature environment. The output frequency response most up to 50Hz, for higher response frequency Division we can customize according to the user requests. The products are truly industrial-grade products, reliable performance, scalability. Suitable for a variety of harsh industrial control environment.

Features:

- Single-Axis Inclinometer
- Accuracy refer to the technical data
- Wide temperature working: -40~+85℃
- IP67 protection class
- Small size :90×50×33mm (customized)
- Measuring Range :±1~±90° optional
- Wide voltage input: 9~36V
- Resolution: 0.001°
- Highly anti-vibration performance >2000g

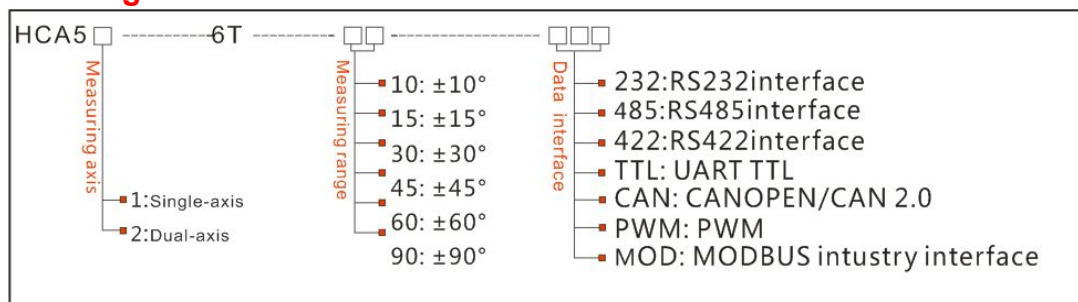
Application:

- Satellite positioning Search
- engineering mechanical measurement of dip angle
- Radar detection of vehicle platform
- Gun Barrel angle measurement in early shooting
- Satellite communications vehicle posture detection
- Ship's navigation posture measurement
- Rail-mobile monitoring
- oil-well drilling equipment
- Underground drill posture navigation
- Based on the angle direction measurement
- Shield pipe jacking application
- Geological equipment inclined monitoring



HCA516T-High Accuracy Digital Type Single-axis Inclinator

Ordering information:



E.g: HCA516T-10-232: Single axis/Standard /±10° Measuring range/ Data interface port RS232

Technical Data

Parameters	Conditions	HCA516T-10	HCA516T-30	HCA516T-60	HCA516T-90	Unit
Measuring range		±10	±30	±60	±90	°
Measuring axis		X	X	X	X	
Resolution		0.001	0.001	0.001	0.001	°
Absolute accuracy		0.005	0.01	0.02	0.05	°
Long term stability		0.01	0.02	0.05	0.08	
Zero temperature coefficient	-40~85°	±0.002	±0.002	±0.002	±0.002	°/°C
Sensitivity temperature coefficient	-40~85°	≤50	≤50	≤50	≤100	ppm/°C
Power on time		0.5	0.5	0.5	0.5	S
Response time		0.05	0.05	0.05	0.05	s
Output rate	5Hz、15Hz、35Hz、50Hz can be setting					
Output signal	RS232/RS485/RS422/TTL/CAN/MODBUS					
EMC	According to EN61000 and GBT17626					
MTBF	≥50000hours/times					
Insulation Resistance	≥100M					
Shockproof	100g@11ms、3Times/Axis(half sinusoid))					
Anti-vibration	10grms、10~1000Hz					
Protection glass	IP67					
Cables	Standard 1M length、wearproof、wide temperature、 Shielded cables 4*0.4mm ² air-plug connector					
Weight	150g(without cable)					

HCA516T-High Accuracy Digital Type Single-axis Inclinometer

* This Technical data only list $\pm 10^\circ$, $\pm 30^\circ$, $\pm 60^\circ$, $+ 90^\circ$ series for reference, other measuring range please refer to the adjacent parameters .

Electronic Characteristics

Parameters	Conditions	Min	Standard	Max	Unit
Power supply	Standard	9	12、24	36	V
	customized		Other voltage		V
Working current	non-loaded		50		mA
Working temperature		-40		+85	$^\circ\text{C}$
Store temperature		-55		+100	$^\circ\text{C}$

Key words:

Resolution: Refers to the sensor in measuring range to detect and identify the smallest changed value.

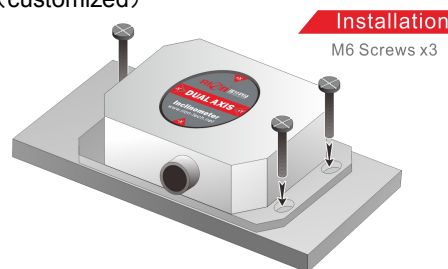
Absolute accuracy: Refers to in the normal temperature circumstances,the sensor absolute linearity, repeatability, hysteresis, zero deviation, and transverse error comprehensive error.

Long term stability : Refers to the sensors in normal temperature conditions, the deviation between the maximum and minimum values after a year's long time work.

Response time: Refers to the sensor in an angle change, the sensor output value reached the standard time required.

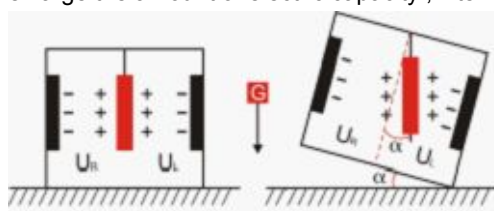
Mechanical Parameters

- Connectors: 1m cable with air-plug connector (customized)
- Protection glass: IP67
- Enclosure material : Aluminum Oxide
- Installation : 3*M4 screws



Working Principle

Adopt the European import of core control unit, using the capacitive micro pendulum principle and the earth gravity principle, when the the inclination unit is tilted, the Earth's gravity on the corresponding pendulum will produce a component of gravity, corresponding to the electric capacity will change, by enlarge the amount of electric capacity , filtering and after conversion then get the inclination.

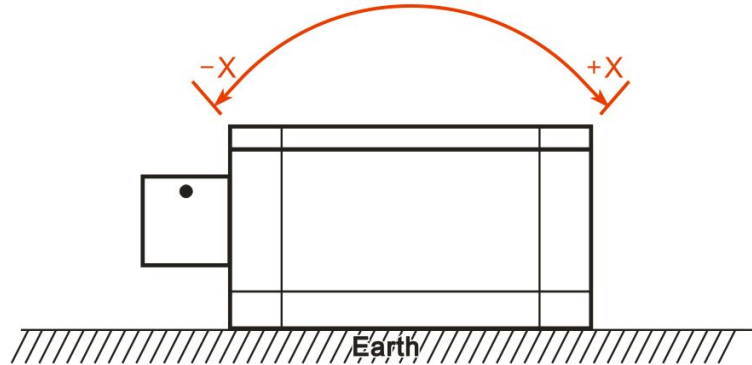


U_1, U_2 Respectively is the pendulum left plate and the right plate corresponding to their respective voltage between the electrodes, when the tilt sensor is tilted, U_1, U_2 Will change according to certain rules, so $f(U_1, U_2)$ On the inclination of α function:
 $\alpha = f(U_1, U_2)$

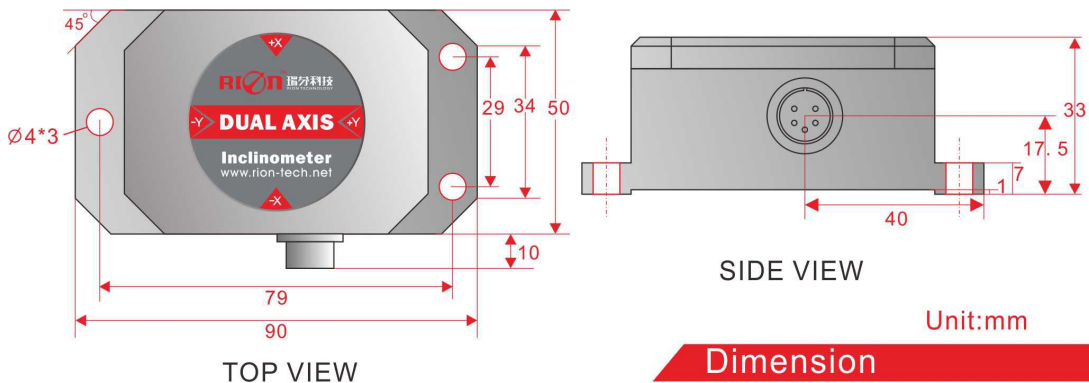
HCA516T-High Accuracy Digital Type Single-axis Inclinator

Measuring Directions&Fix

The installation must guarantee the product bottom is parallel to measured face, and reduce the influence of dynamic and acceleration to the sensor. This product can be installed horizontally or mounted vertically (mounted vertically selection is only applicable to the single axis), for installation please refer to the following scheme.

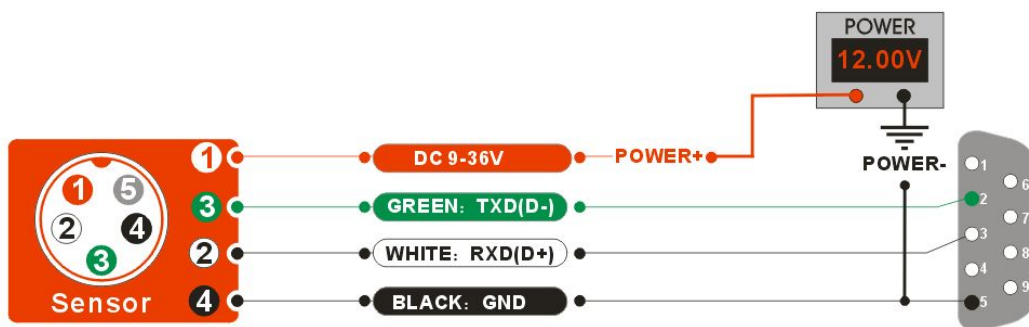


Dimension



Electrical Connection

Line color function	BLACK	WHITE	RED	GREEN	GRAY
	GND	RS232(RXD)	Vcc 9~36V	RS232(TXD)	FACTORY
	Power Negative	Or RS485(D+)	Power positive	Or RS485(D-)	Use only

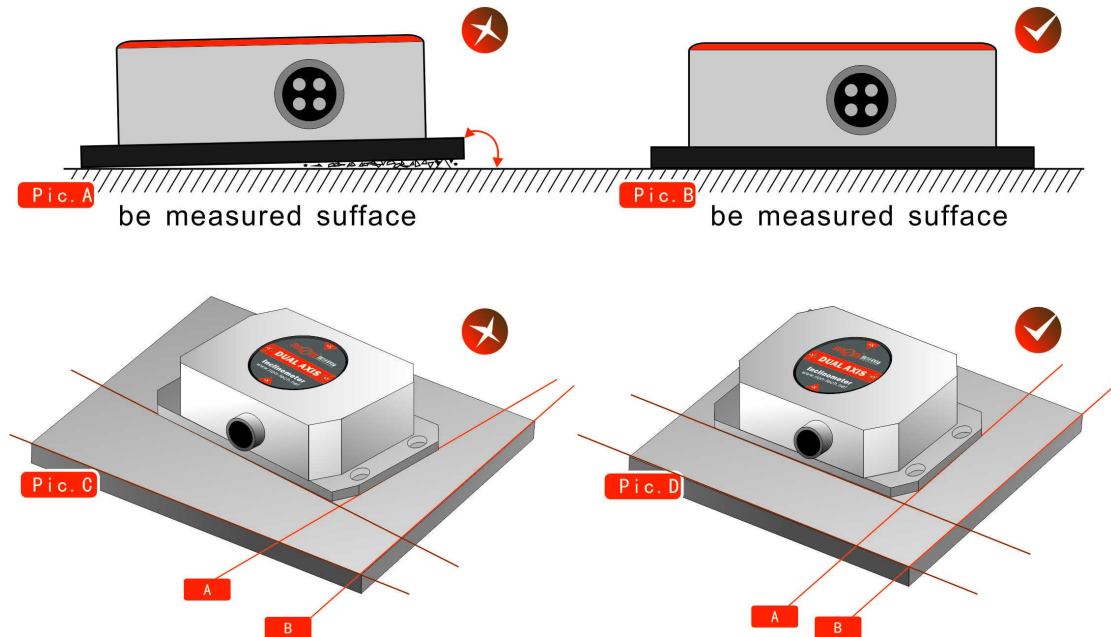


HCA516T-High Accuracy Digital Type Single-axis Inclinometer

Production installation notes :

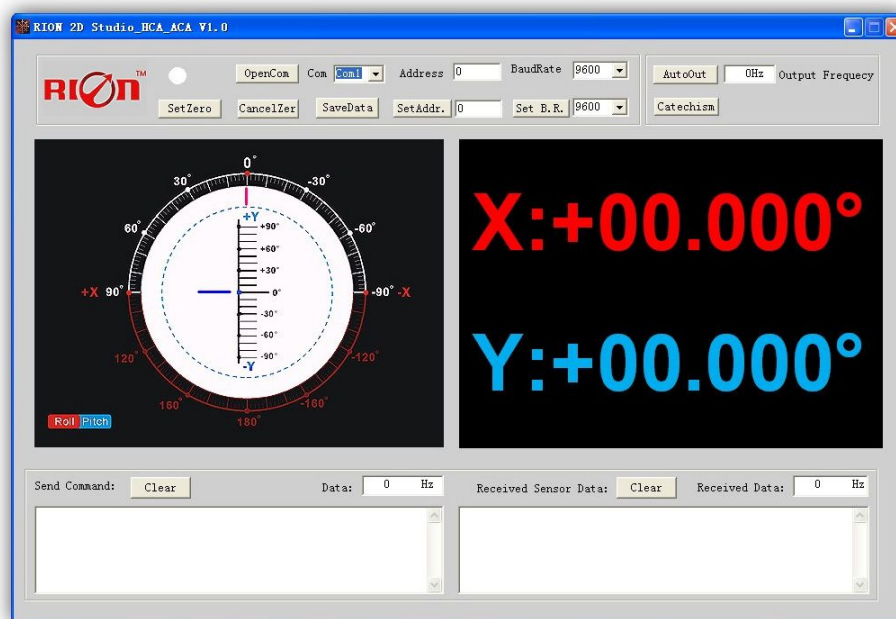
Please follow the correct way to install tilt sensor, incorrect installation can cause measurement errors, with particular attention to the "surface", "line"::

- 1) The Sensor mounting surface and the measured surface must be fixed closely, smoothly, stability, if mounting surface uneven likely to cause the sensor to measure the angle error. See Figure Pic.AB
- 2) The sensor axis and the measured axis must be parallel, the two axes do not produce the angle as much as possible. See Figure Pic.CD



RION serial port tester software

You can download the RION angle debugging software from RION's official website for the preliminary angle debugging, also you Can download public version of the serial port assistant software on line for using .



HCA516T-High Accuracy Digital Type Single-axis Inclinator

Open/Close: Open and close COM port;

Com: Select the the device corresponding to the COM port

Address: Fill in the sensor current address code, the factory default is 00

Set Address: Set the sensor address code input box on the right to enter the desired address code, click Set Addr button

Save Data: Save the data, click here data can be synchronized Save angle data, the file is stored by default in the C: ---- COMDATA file

Set Zero: Set relative zero, the sensor current angle is 00.00 degrees

Cancel Zero: Unset the relative zero, to restore the sensor to the factory absolute zero;

Baud Rate: Select the sense baud rate , the factory default is 9600;

Set Baud Rate: Set the sensor baud rate, on the right of the selection box to select corresponding baud rate then click SetB.R. button;

Auto Output: Switch the sensor to automatically output mode, in the automatic output mode can be filled with different output frequency in Hz;

Catechism: The sensor switch to answer pattern, such as choosing the answer type, must input "send command "(command, please refer to the specification) on the left of "Send Command" input box, but also can fill in the transmit frequency in the Send Data, the unit Hz;

Note: after install the RION's debugging software, if can not open, please operate by the following steps (please appear to the administrator status to operate):

- 1) Copy these three files mscomm.srg、mscomm32.ocx、mscomm32.dep from the folder to C:/Windows/system32 path below.
- 2) Click "Start" --"run" --"regsvr32 mscomm32.ocx", You are prompted to install successful dialog.

Product Protocol

1.DATA FRAME FORMAT:

(8 bits date, 1 bit stop, No check, Default baud rate 9600)

Identifier (1byte)	Date Length (1byte)	Address code (1byte)	Command word (1byte)	Date domain	Check sum (1byte)
68					

Date format: hexadecimal

Identifier: Fixed68

Data length: From data length to check sum (including check sum) length

Address code: Accumulating module address, Default :00

Date domain will be changed according to the content and length of command word

Check sum: Data length、Address code、Command word and data domain sum,No carry.

2、COMMAND word analysis

Desc.	Meaning/Example	Description
0X04	Meanwhile read angle command E.g: 68 04 00 04 08	Data domain(0byte) No Data domain command
0X84	Sensor answer reply E.g: 68 0D 00 84 00 20 10 00 00 00 05 05 00 CB	Data domain (9byte) AA AB BB CC CD DD EE EF FF AA AB BB: three character means X axis CC CD DD: three reserved characters, regular 00 00 00 EE EF FF : three characters means temperature

HCA516T-High Accuracy Digital Type Single-axis Inclinator

		<p>data</p> <p>Angle format with same analytic method as X axis or Y axis</p> <p>The angle on the left example is X axis 02.010deg, Y axis 00.000deg, temperature +50.50</p> <p>(if Without a customized temperature output request, this data regular 000 000)</p> <p>CB: check sum , the sum of all the data in hexadecimal without prefix 68</p>
0X05	<p>Setting relative/absolute ZERO:</p> <p>Can set the current angle to Zero degree, relative measurement, can also be set to absolute ex-factory zero, power off save E.g: 68 05 00 05 00 0A</p>	<p>Data domain (1byte)</p> <p>00: absolute ZERO</p> <p>01: relative ZERO</p>
0X85	<p>Sensor answer reply command</p> <p>E.g: 68 05 00 85 00 8A</p>	<p>Data domain (1byte)</p> <p>Data domain in the number means the sensor response results</p> <p>00 Setting successfully FF Setting failure</p>
0X0B	<p>Setting communication rate</p> <p>E.g: 68 05 00 0B 03 13</p> <p>The command setting is effective after power off then restart (power off with save function)</p>	<p>Data domain (1byte)</p> <p>Baud rate: default :9600</p> <p>00 means 2400 01 means 4800</p> <p>02 means 9600 03 means 19200</p> <p>04 means 38400 05 means 115200</p>
0X8B	<p>Sensor answer reply command</p> <p>E.G:68 05 00 8B 90</p>	<p>Data domain (1byte)</p> <p>Data domain in the number means the sensor response results</p> <p>00 Success FF Failure</p>
0X0C	<p>Setting sensor output mode</p> <p>Response rule;</p> <p>Need upper computer send reading angle command , the sensor answer the corresponding angle</p> <p>Automatic output rule:</p> <p>The sensor with power on can Automatically output X angle , The output frequency base on what be setted, if you need output High frequency, please set baud rate as 115200 (Power off with save function)</p> <p>E.g: 68 05 00 0C 00 11</p>	<p>Data domain (1byte) Factory default: 00</p> <p>00 Answer reply mode</p> <p>01 5Hz Automatical output mode</p> <p>02 15Hz Automatical output mode</p> <p>03 25Hz Automatical output mode</p> <p>04 35Hz Automatical output mode</p> <p>05 50Hz Automatical output mode</p>
0X8C	<p>The sensor answer reply command</p> <p>E.g: 68 05 00 8C 00 91</p>	<p>Data domain (1byte)</p> <p>Data domain in the number means the sensor response results</p> <p>00 Success FF Failure</p>
0X0F	Setting module address	Data domain

HCA516T-High Accuracy Digital Type Single-axis Inclinator

	<p>command</p> <p>The sensor default address is 00, 1, such as a plurality of sensor to be connected with a bus cable, e.g RS485.requires each sensor is set to a different address, in order to achieve control and response angle .</p> <p>2, If successfully changed the new address, follow all of the commands and responding</p> <p>Packet address code has to switch to the new address code which already changed then to be effective, otherwise the sensor will not respond to commands.(power off with save function)</p> <p>E.g: 68 05 00 0F 01 15</p> <p>Setting the address to 01</p> <p>68 05 FF 0F 00 13</p> <p>Use the common address to reset address to 00</p>	<p>(1byte) XX Module address</p> <p>Address from 00 to EF range</p> <p>Note: All products have a common address :FF, If forget the address what has been set during operation , can use FF address to operate the product can still normally respond</p>
0X8F	<p>The sensor answer reply command</p> <p>E.g: 68 05 00 8F 94</p>	<p>Data domain (1byte) ,</p> <p>Data domain in the number means the sensor response results</p> <p>00 Success FF Failure</p>
0X0D	<p>Query relative/absolute ZERO</p> <p>Used to query the sensor current ZERO mode is relative ZERO or absolute ZERO</p> <p>E.g : 68 04 00 0D 11</p>	<p>Data domain (0byte)</p> <p>No data domain commands</p>
0X8D	<p>The sensor answer reply command</p> <p>E.g:68 05 00 8D 00 92</p>	<p>Data domain (1byte) ,</p> <p>Data domain in the number means the sensor response results</p> <p>00 Absolute ZERO</p> <p>01 Relative ZERO</p>



※More products information, please refer to the company's Website : www.rion-tech.net



深圳市瑞芬科技有限公司

CHINA SHENZHEN RION TECHNOLOGY CO.,LTD.

✓ 倾角传感器 ✓ 倾角（调平）开关 ✓ 数显水平仪 ✓ 陀螺仪
✓ 三维电子罗盘 ✓ 加速度计 ✓ 航姿参考系统 ✓ 寻北仪

T: 0755-29657137 / 29761269 F: 0755-29123494

W: www.rion-tech.net E: sales@rion-tech.net

A: 中国·深圳市宝安区82区华丰科技园五期3F

Attitude Solution Provider
姿态方案解决专家！